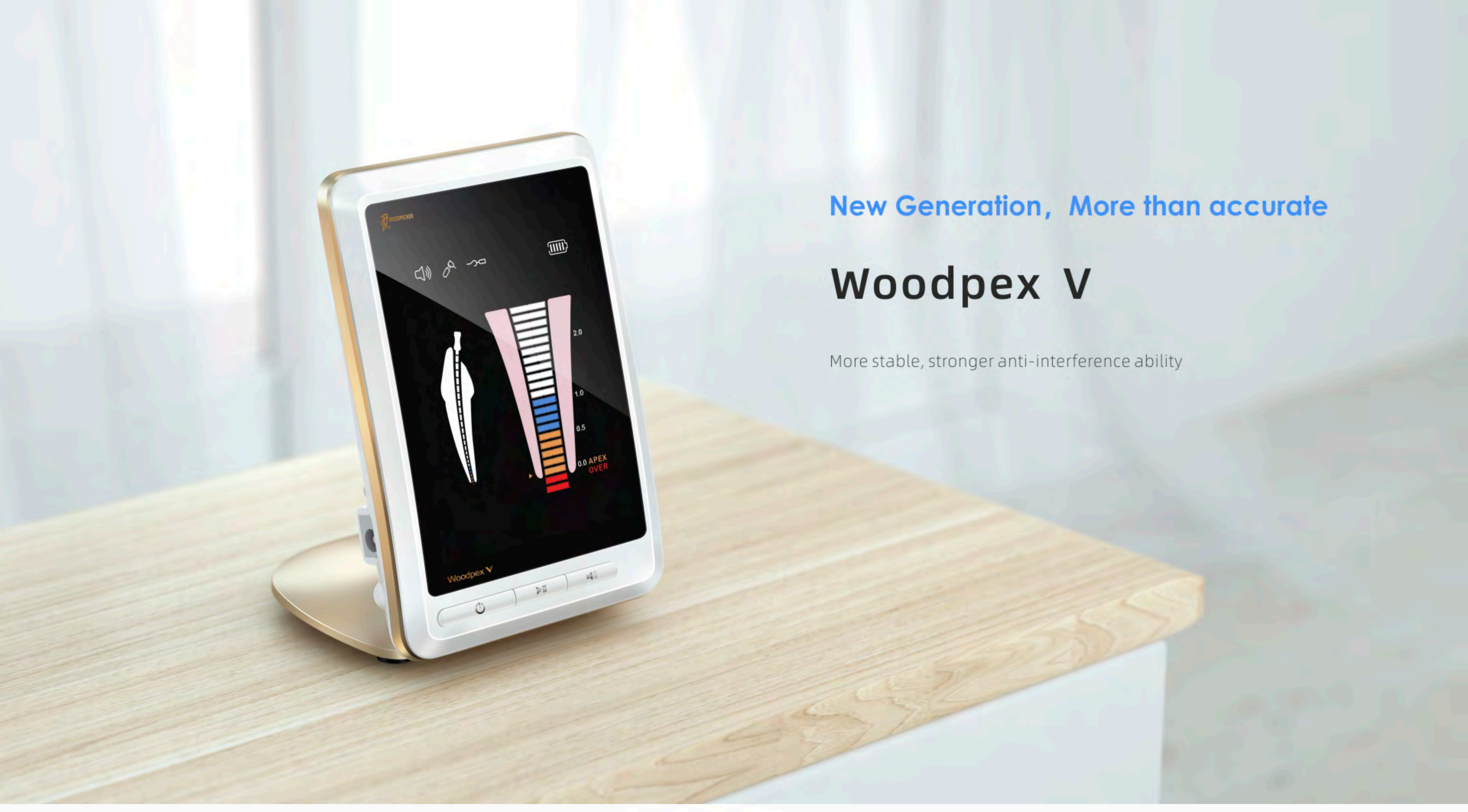


Woodpex V

New Generation. More than accurate



product details



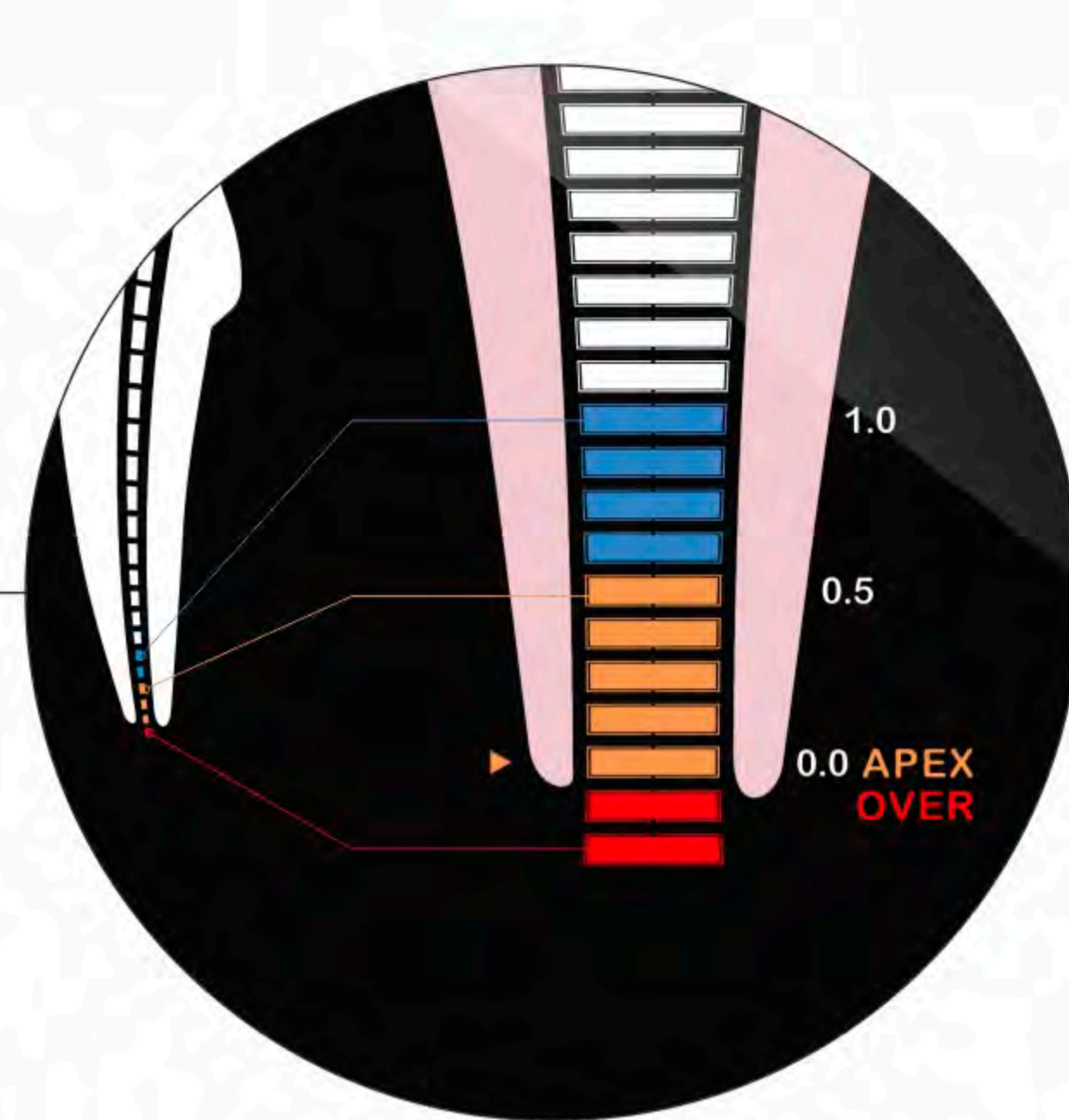
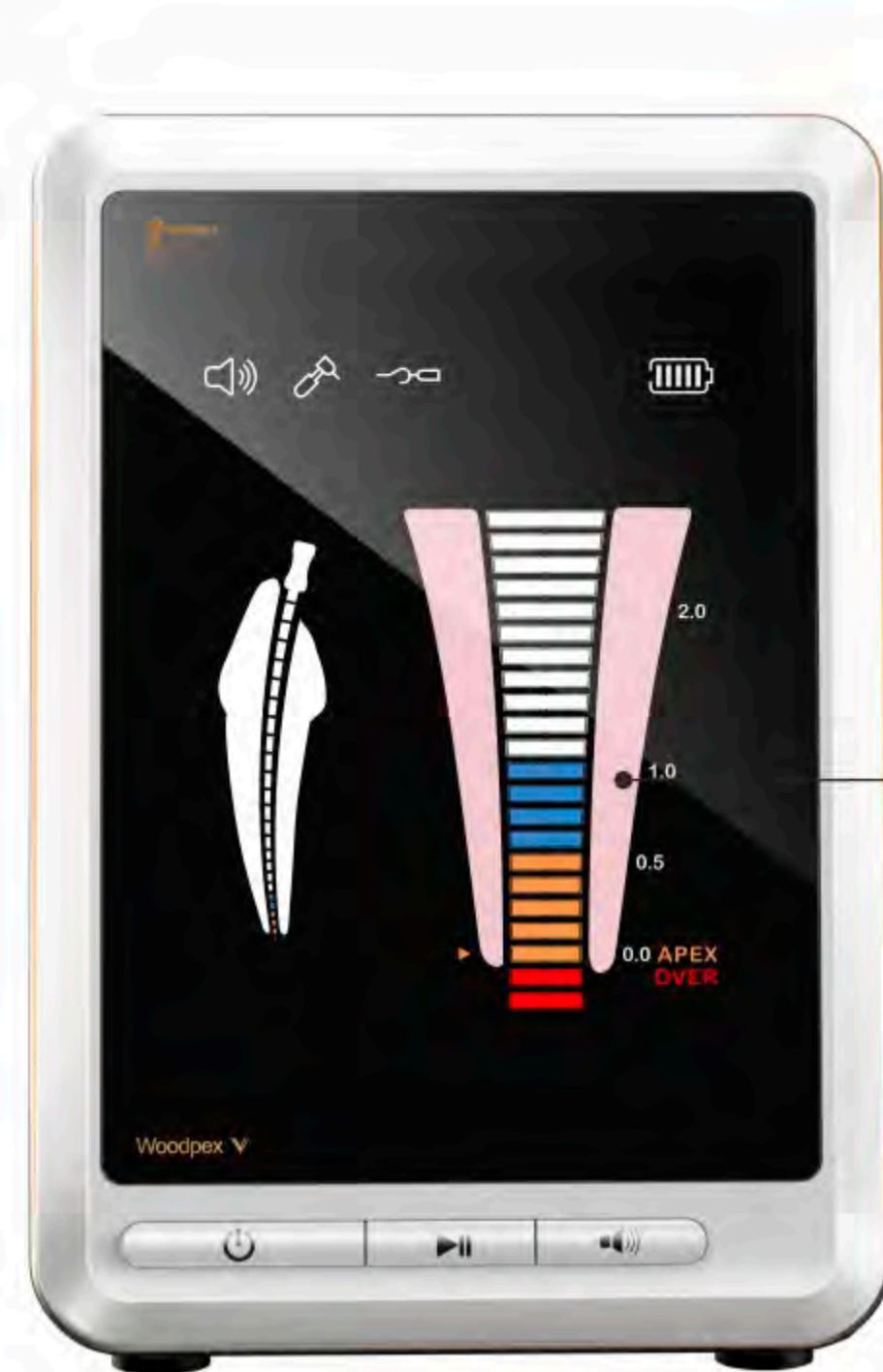
New Generation, More than accurate

Woodpex V

More stable, stronger anti-interference ability



More than accurate



Anti-interference

Newly upgraded algorithm makes it more stable and enables stronger anti-interference ability.



Multi-frequency technology, able to measure accurately when blood or residual pulp in root canal.



Measurement results will not be affected by the tooth type.



incisor teeth canine teeth bicuspid premolar teeth

The defect of traditional measurement method

01

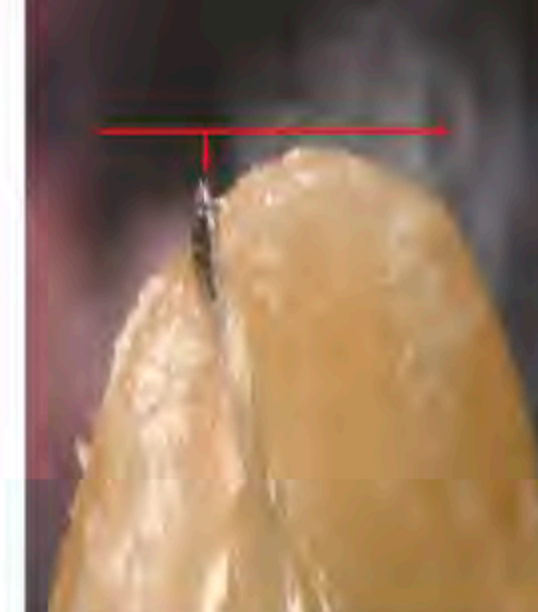
Disadvantage of handing method

Based on hand feeling and patient's pain, dentists decide whether the measuring tool reaches apical foramen, with high subjectivity and low accuracy.

Foreign literature suggest that providing the range of error +0.5 mm, accuracy of handing method is only 42%.



X ray film shows under-filling



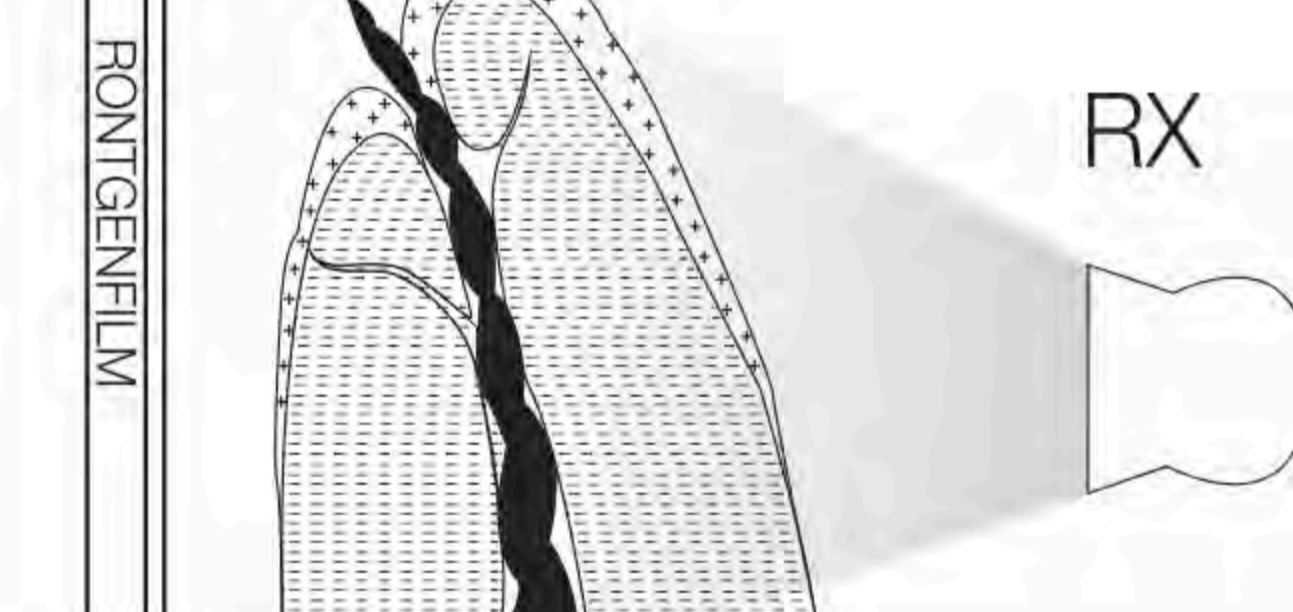
Actually it is over-filling

02

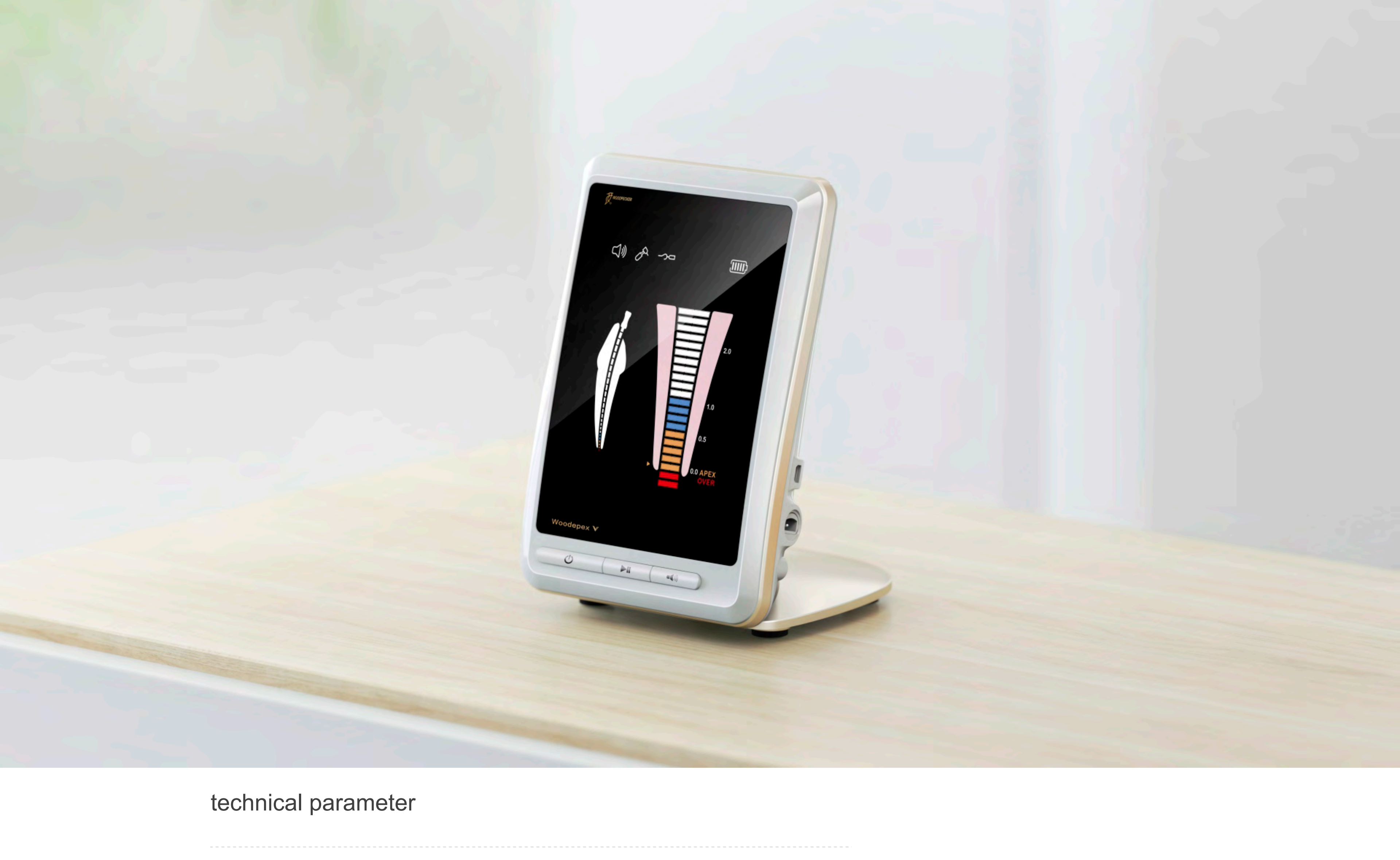
Disadvantage of X ray film

3D structure shooting at 2D plana, because of different angles, easily getting wrong data.

Apical foramen can't be shown in the X ray film, for over 80% apical foramens are in the side edge instead of apex.



The apical foramen is in the side edge, X ray shooting cause error length, the greater error, more serious over-filling



technical parameter

Dimensions: 84mm (length) × 88mm (width) × 112mm (height)
Weight: 336g